

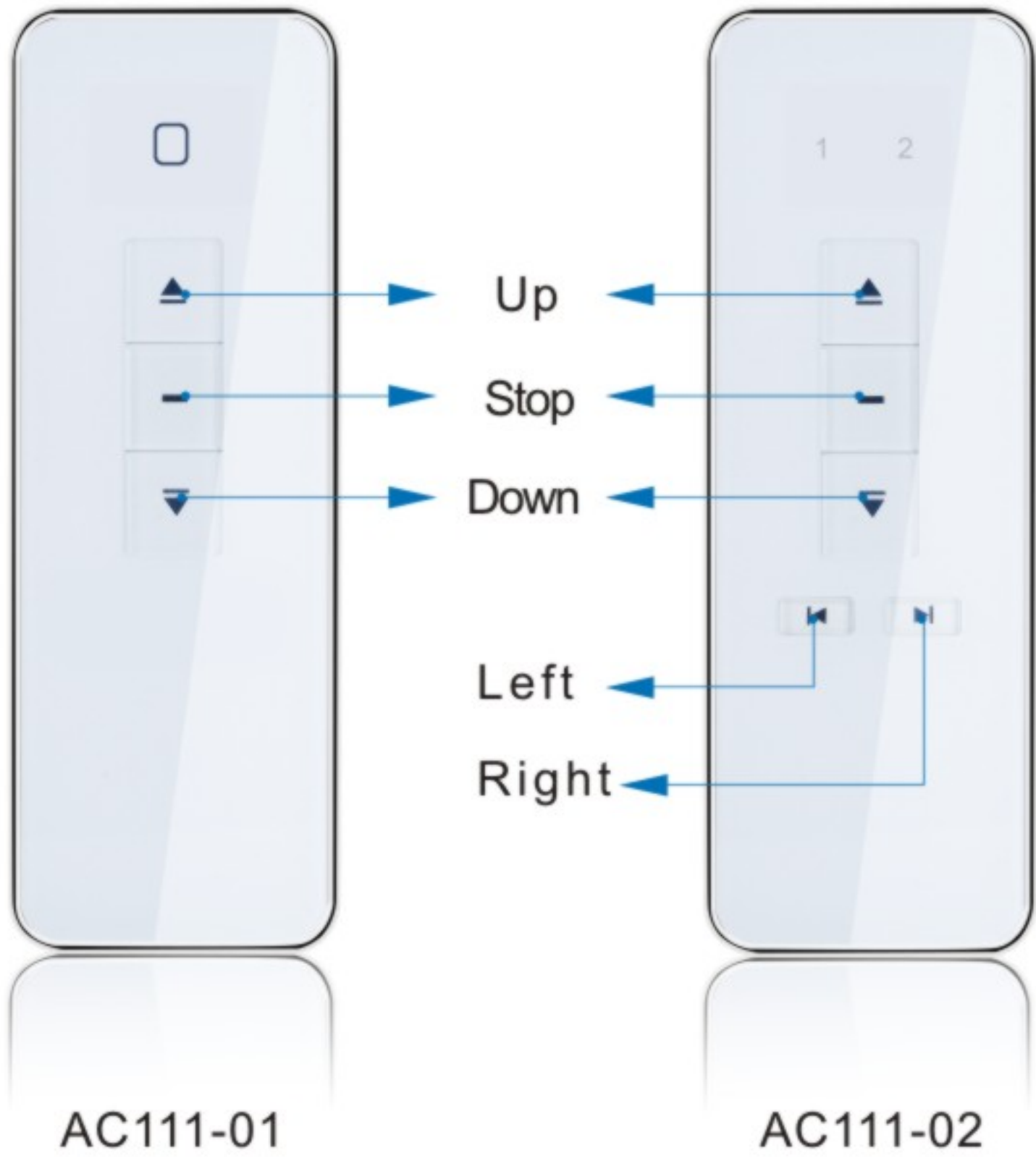
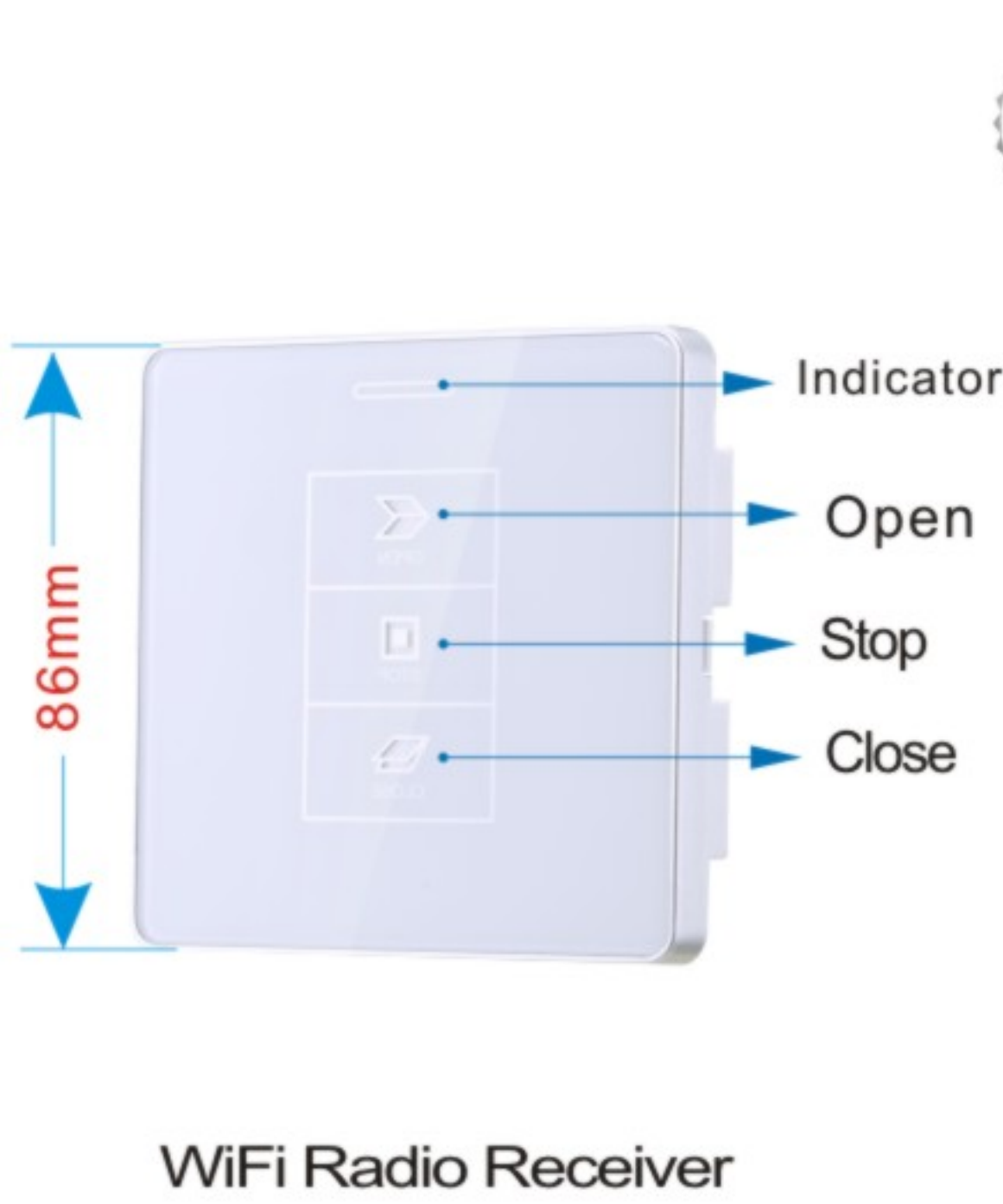
86mm WiFi Wall Type Receiver

MANUAL

⚠ Installation Note:

- Besides the standard of electric safety, please follow:
- Keep receiver far from metal parts, or it will affects the receive distance.
 - Operation distance 80m in the open air.
 - Min distance between receiver and floor: 1.5m.
 - Min distance between receiver and ceiling: 0.3m.
 - Do cut offer power supply before installation.
 - Avoid static electricity which could damage some electronic components.
 - Use flexible cable.
 - Ensure that no longitudinal forces act on the cable carriers.

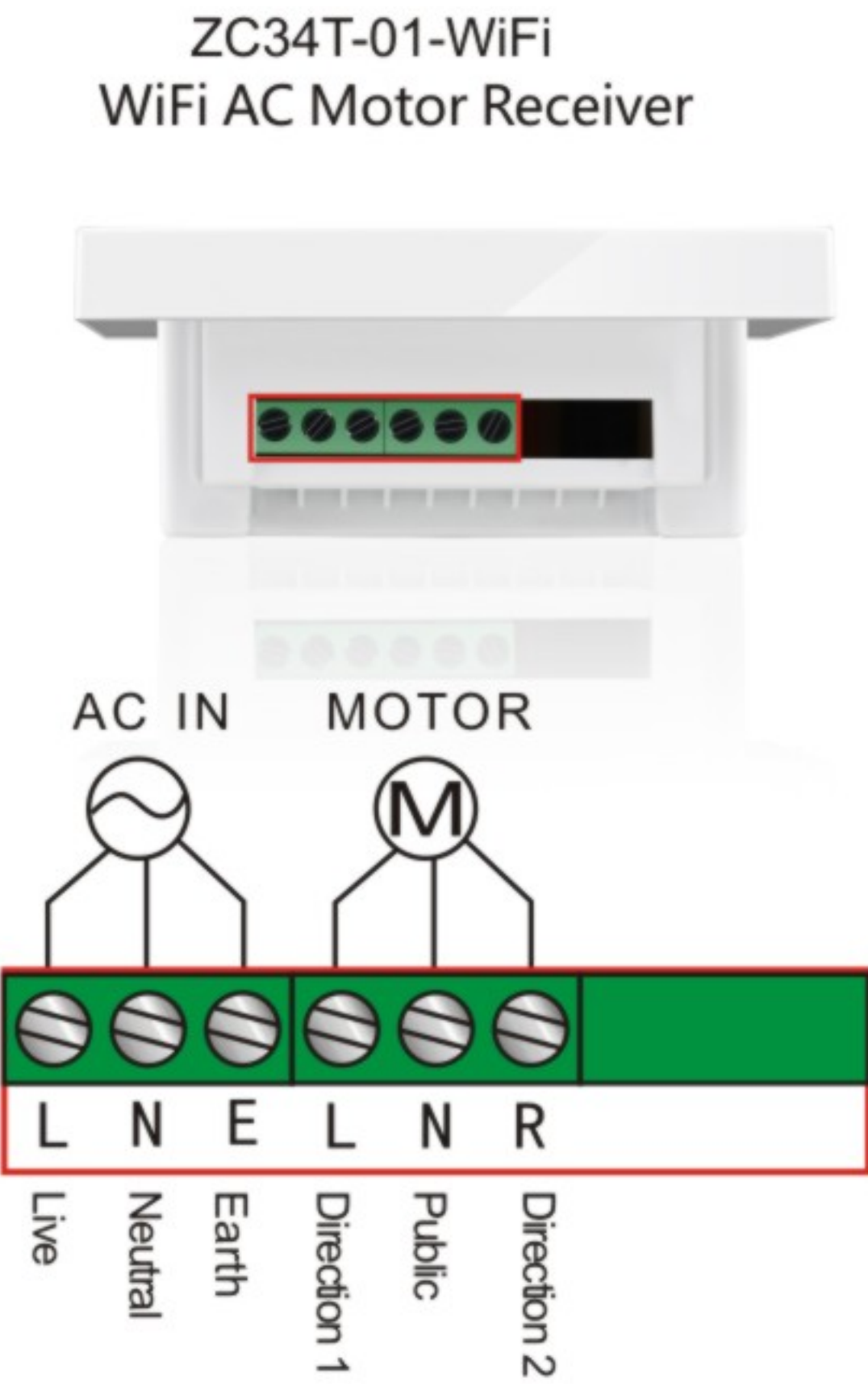
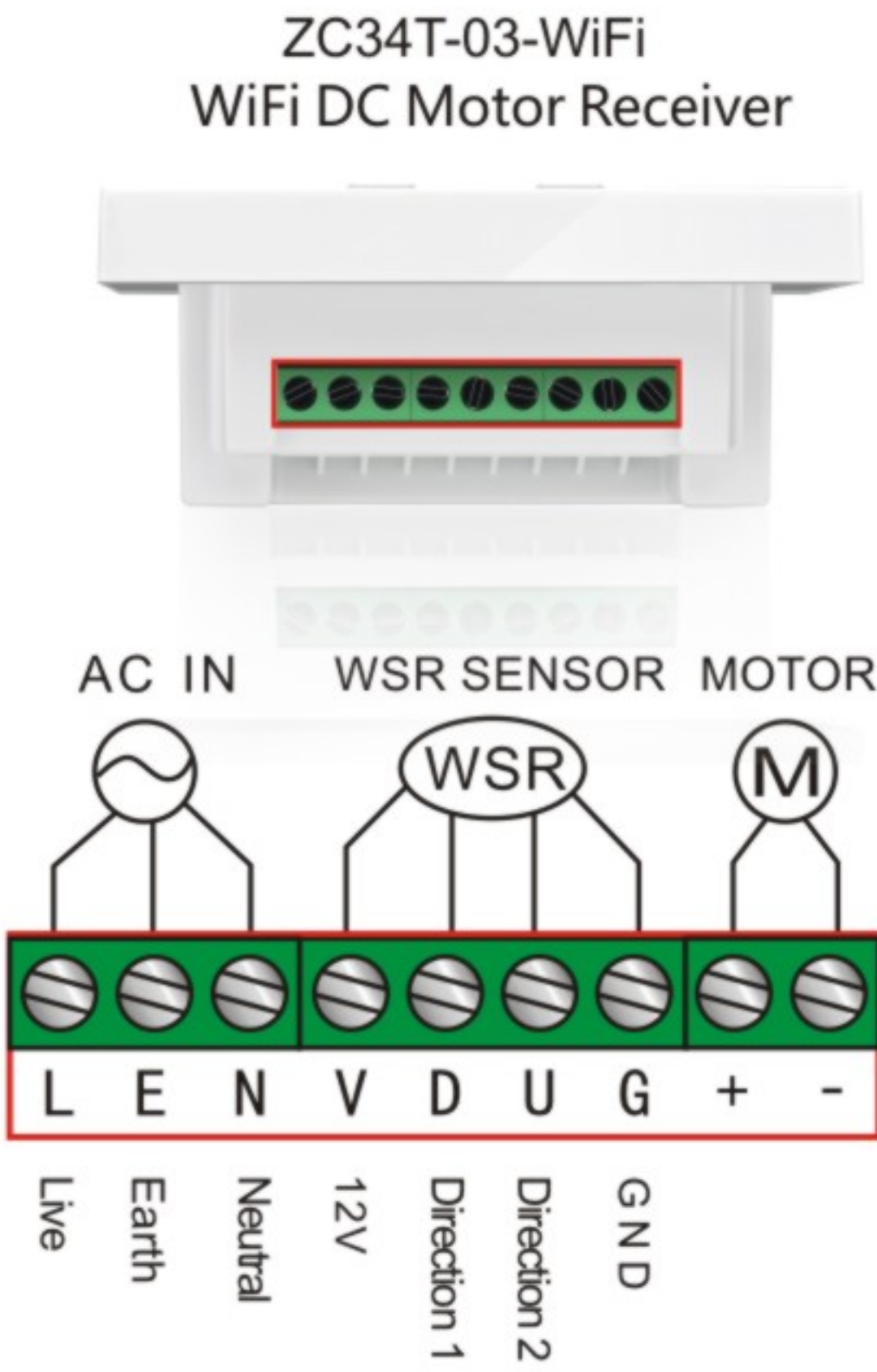
Product diagram



Parameter

Model No.	Input voltage	Loading power	Operation	Frequency: 433.92MHz Working temperature: -40℃ ~ +85℃ Sensitivity: -110dBm
ZC34T-03-WiFi	AC120V/230V 50-60Hz	≤ 72W	remote/ manual/ sensor	
ZC34T-01-WiFi		≤ 500W		

Installation wiring

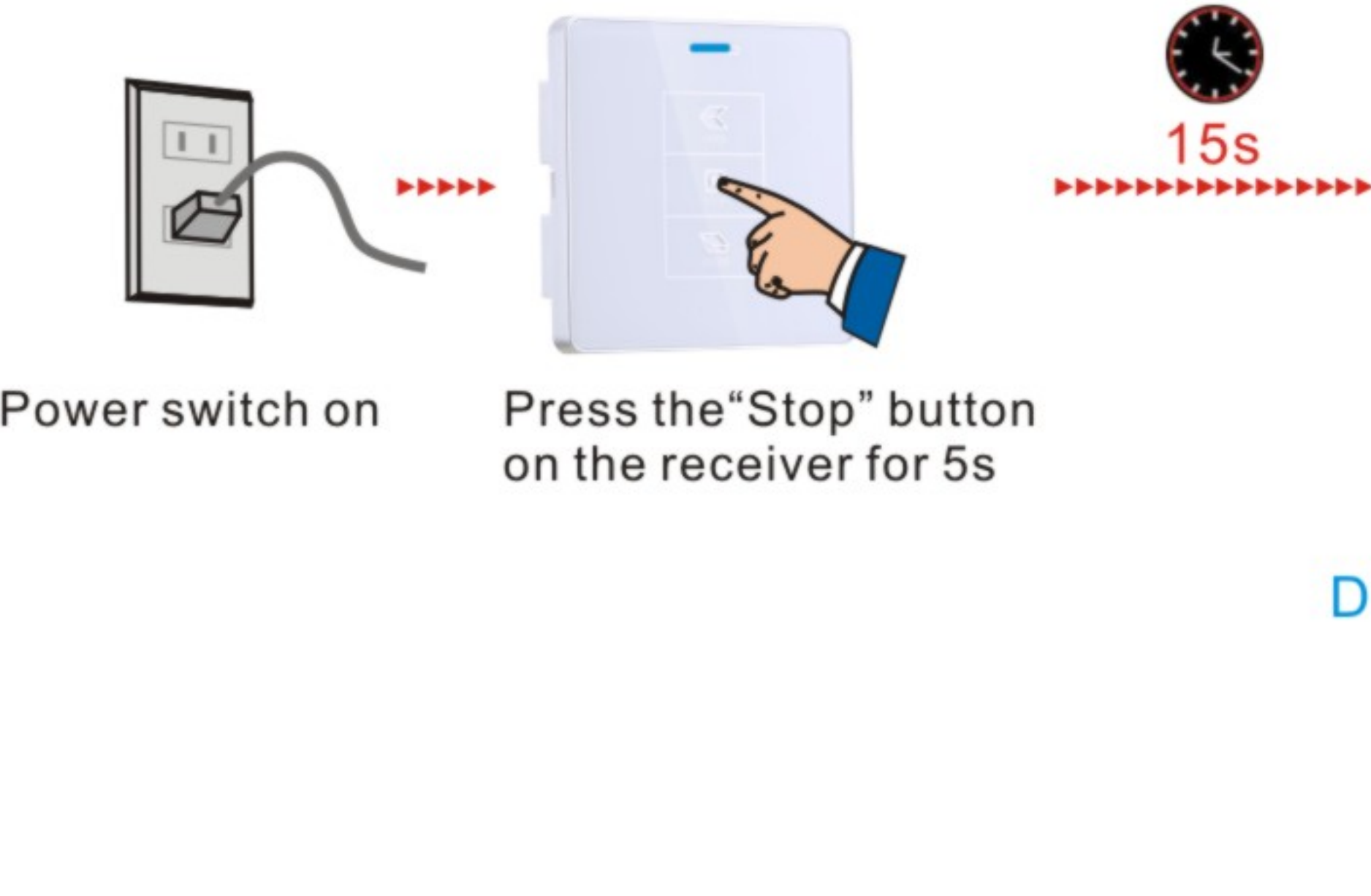


Trouble and shootings

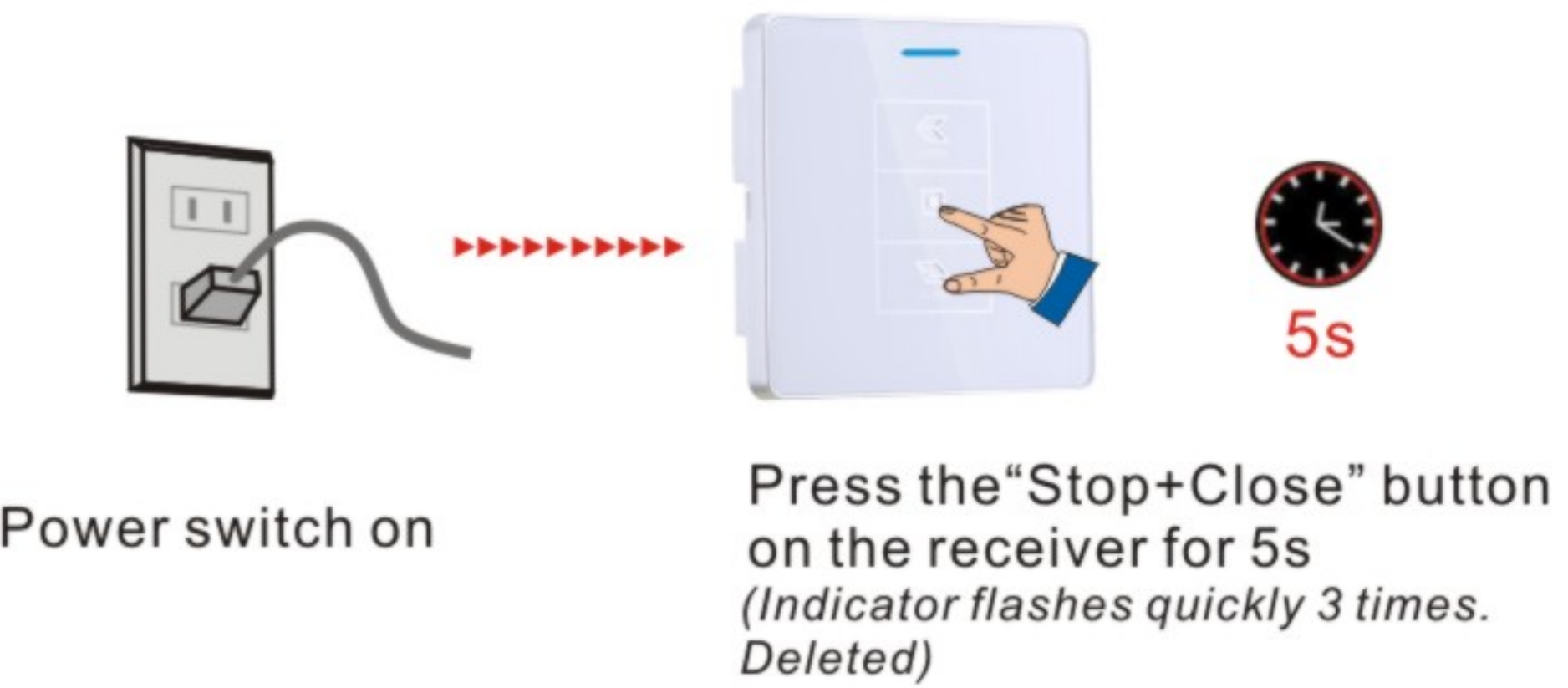
No.	Performance	Checking point
1	Indicator on receiver do not light	Please check wiring connection for receiver
2	Indicator on transmitter do not light or poor light	Please check the battery and installation
3	Transmitter and receiver work commonly, but motor has no rotating	Please check the motor wiring

Installation instruction

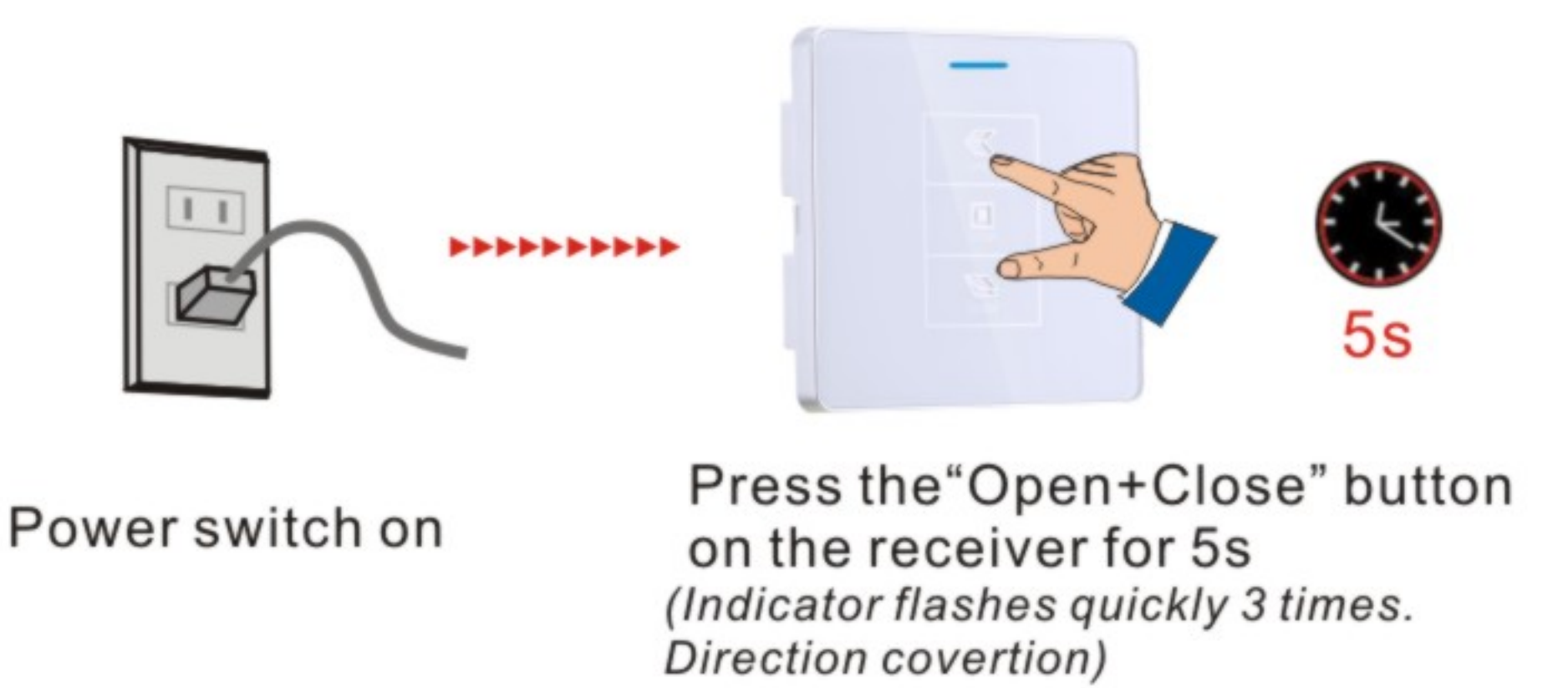
1.Program/Delete single code



2.Delete all code



3.Direction coverture



Connect Network

