

# AM56 Standard Electric Chain Window Opener Motor Instruction V1.0

Chain window opener motor widely apply to motorized sash windows, casement windows and various skylights. It is particularly suitable for windows mounted in high, where people hard to reach, working with different kinds of automation control systems such as smoke detector and temperature detector, it is easy to operate the window open and close automatically.



## I、Features

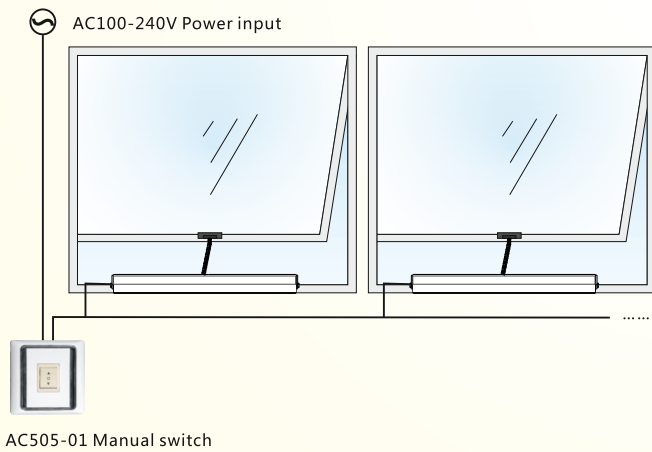
- Wide voltage 100-240V AC power input, suitable for all country's different requests.
- Adjust the journey by adjusting knob; the Maximum stroke could reach 400mm.
- Apply to small size window, down to 470mm windows.
- The chain materials use double layers stainless metal.
- Quality stable and smooth running.
- Aluminum housing with sand blast treatment; the cover and brackets are zinc alloy die castings.
- Two Flame Resistance ABS holders and the POM sliding guide make the motor more safety and silent.

## II、Parameters

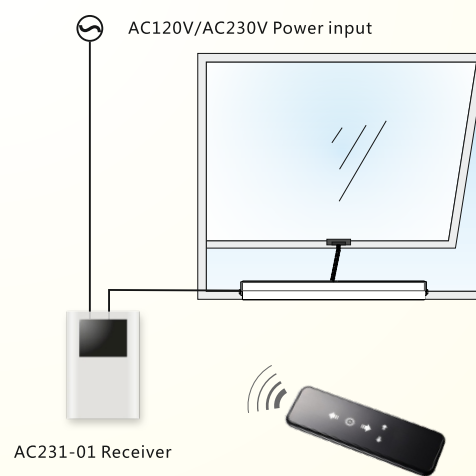
Model No.	Rated Voltage	Rated Power	Push/Pull Force	Speed	Running Trip	Temp	Size	IP Class
AM56-L300N-400mm	AC 100-240V	28W	300N/300N	10mm/s	100-400mm	-20°C~+60°C	460X42X56 mm	IP43

## III、Application

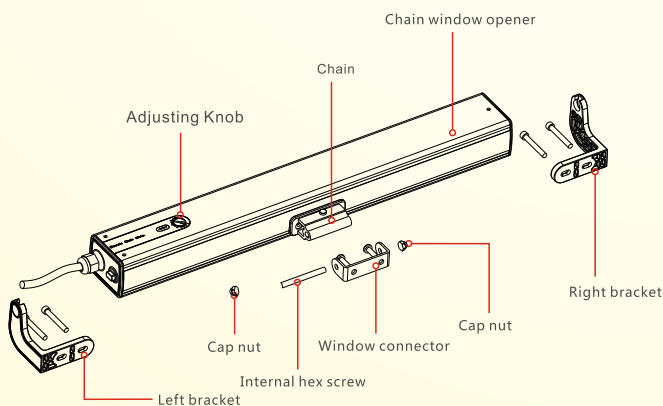
### Application 1: External manual switch



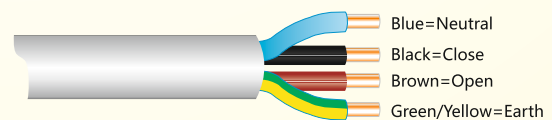
### Application 2: External receiver



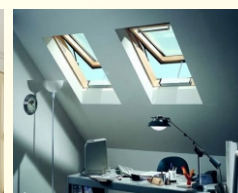
## IV、Structure Explanation



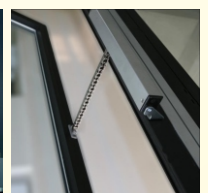
## V、Installation



Hopper window application



Top-hung window application

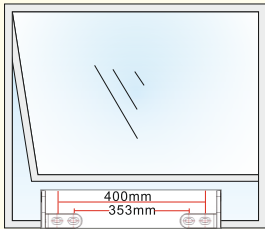


Center-pivoted window application

## VI. Installation Step

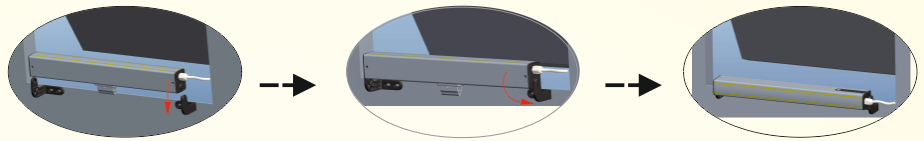
### Step 1. Bracket Installation

Measure the width of the window frame and install the window opener in the middle of the window frame. Install the two brackets according to the size as photo 1 shown.



(Photo 1)

### Step 2. Motor installation



1. Motor's chain face down, put the motor into the bracket.

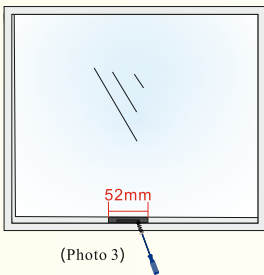
2. Motor rotate 90 degree as the arrow diagram. Make motor's chain face the window.

3. Motor installation finish.

(Photo 2)

### Step 3. Window connector installation

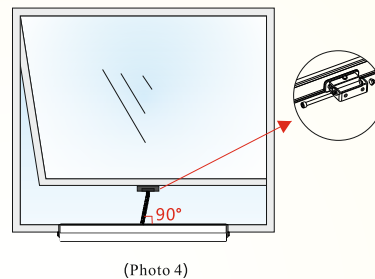
Measure the width of the window sash and install the window connector in the middle of window sash. Fix the connector on the window according to the size as photo3 shown.



(Photo 3)

### Step 4. Diagram of motor connector and motor

Put the fix pin into the hole connecting motor and the connector and fix the screw. Adjust the bracket make sure the chain perpendicular to motor. Installation finish.



(Photo 4)

## VII. Operation Instruction

Please set up the journey before using

### 1. Journey setting

There are 1, 2, 3, 4 four figure on the adjusting knob, as the left photo shown, each figure means 100mm, 200mm, 300mm and 400mm journey. You could refer to these figures adjust the journey you want.



Adjusting Knob

For example: If you want the motor extend 200mm, you could operate as follow:

1. Adjust the knob to figure 2.

2. Operate the motor, the motor will open the window 200mm and stop automatically (If the journey is not the perfect position, you could adjust the knob a little; the motor will not run automatically after your adjusting, you have to shut the window and then open the window again, motor will run to the new limit position).

Attention: The motor closing stop against obstacle.

## VIII. Common fault settlement

No.	Faults Phenomenon	Faults Reason	Elimination Methods
1	Power on, motor isn't working.	a. Motor is overload. b. the motor is stuck by Inappropriate installation.	a. Change motor to bigger torque. b. Check every components installed in the right way.
2	Motor suddenly stop when it's working.	a. Motor encounter obstacles, which will make the motor stop to protect itself. b. Power off.	a. Power off, remove the obstacles. b. Power on the motor.